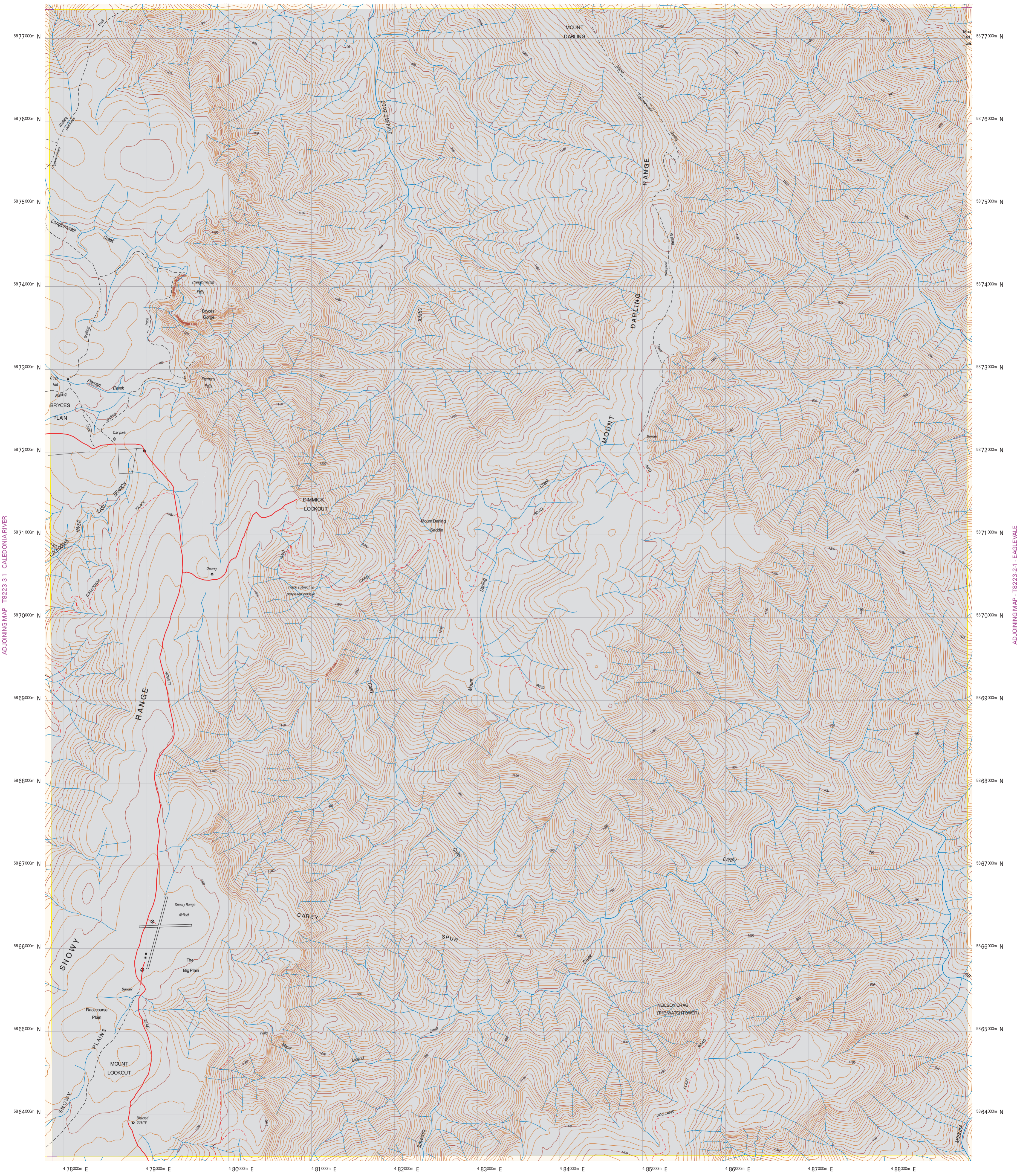


LAT./LONG. OF 1:25000 MAPSHEET CORNER
146° 45' 00"
37° 15' 00"

ADJOINING MAP - T8223-1-3 - WONNANGATTA

LAT./LONG. OF THE 1:25000 MAPSHEET CORNER
146° 53' 00"
37° 15' 00"



ADJOINING MAP - T8223-3-1 - CALEDONIA RIVER

ADJOINING MAP - T8223-2-1 - EAGLEVALE

LAT./LONG. OF 1:25000 MAPSHEET CORNER
37° 23' 00"
146° 45' 00"

ADJOINING MAP - T8223-2-3 - SURVEYORS CREEK

LAT./LONG. OF THE 1:25000 MAPSHEET CORNER
37° 23' 00"
146° 53' 00"

MAP CREATED BY FIRE MANAGEMENT BRANCH FROM NRE AND OTHER DATA.
 This map has been produced automatically using DNRE Corporate Geospatial Library data.
 Before using this map refer to file - DATA QUALITY.PDF
 - Crown land information sourced from Land Information Management System (LIMS).
 - Tree Cover change sourced from 1:100 000 TREE CHANGE (1995) - TCH00_9095.
 - Topographic data sourced from the 1:25 000 topographic layers.

<ul style="list-style-type: none"> Crown Land (LIMS) Extent of tree cover over Freehold land (1995) Main road - sealed Main road - unsealed Minor road - urban Minor road - rural Walking track / Access Road Walking Track (Trail - foot) Railway Line / Spur Tamway Disused Railway Tunnel 	<ul style="list-style-type: none"> Embankment / Cutting Electricity transmission line Pipeline (other than water) Wall / Fence Mine / Quarry Landmark Area boundary State or Territory Restricted Area Coastline Coastal Flat Perennial / Intermittent watercourse River / Run - perennial Swamp / Wetland Double line Stream Water pipeline Jetty / Boat Ramp Intermediate Contour Index Contour Decimetres Depression Contour Decimetres Index Depression Contour Decimetres Cliff 	<ul style="list-style-type: none"> Windbreak Buildings Windmill / Windpump Railway Station Runs Cattle grid Helipad Mine Tank (Storage) Silo Pylon Small quarry Supernumerary station Rock Waterhole Sinkhole Spring Falls Dam or weir Swimming pool Bore
--	---	--

STATE GOVT. PUBLISHED MAPSHEET - MOUNT DARLING 8223-S (VIC)
 AUSLIG 1:100 000 MAPSHEET - HOWITT 8223

FILE REF: T8223-2-4.PDF - VERSION 1.0 - File Produced March 12, 2000

FIRE MANAGEMENT BRANCH - DEPARTMENT OF NATURAL RESOURCES AND ENVIRONMENT

FIRE MANAGEMENT BRANCH - DEPARTMENT OF NATURAL RESOURCES AND ENVIRONMENT